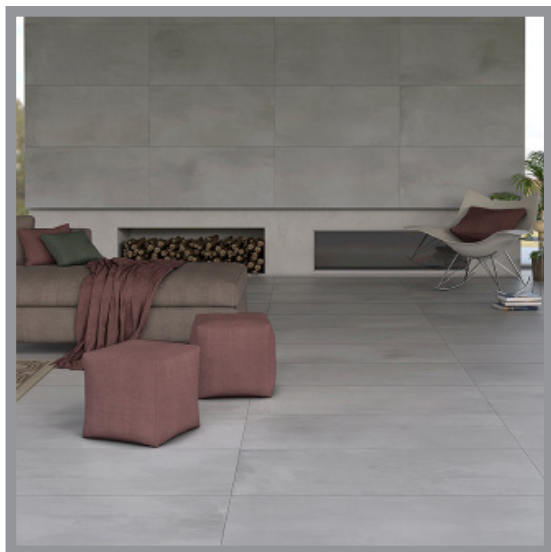


ABITARE STUDIO

PORCELAIN 60x60cm (23.6"x23.6") | 80x80cm (31.4"x31.4") | 60x119.8cm(23.6"x47")

Want to see the Abitare Studio Brochure? Visit www.saranatile.com



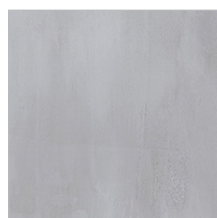
PACKAGING		**INFORMATION MAY CHANGE WITHOUT NOTICE**						
	BOX			PALLET			TECHNICAL	
SIZE	PIECES	SQ.FT	LBS	PIECES	BOXES	SQ.FT	PEI	MOHS
60x60cm	4	15.5	55	128	32	496	-	-
80x80cm	2	13.8	55	72	36	496.8	-	-
60x119.8cm	2	15.5	59.5	72	36	558	-	-



ABISTU - SAND60
Sand (60x60cm)
\$ 7.95/Sq.Ft



ABISTU - IRON60
Iron (60x60cm)
\$ 7.95/Sq.Ft



ABISTU - STEEL60
Steel (60x60cm)
\$ 7.95/Sq.Ft



ABISTU - IVORY60
Ivory (60x60cm)
\$ 7.95/Sq.Ft



ABISTU - SAND80
Sand (80x80cm)
\$9.95/Sq.Ft



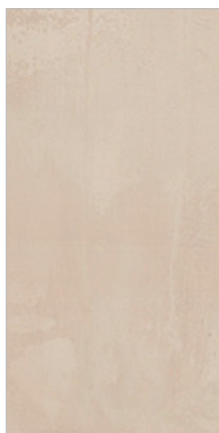
ABISTU - IRON80
Iron (80x80cm)
\$9.95/Sq.Ft



ABISTU - STEEL80
Steel (80x80cm)
\$9.95/Sq.Ft



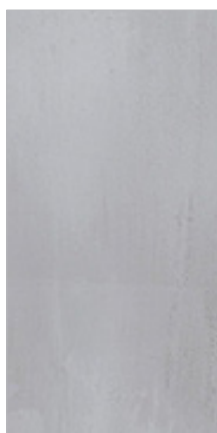
ABISTU - IVORY80
Ivory (80x80cm)
\$9.95/Sq.Ft



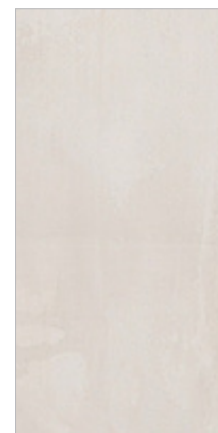
ABISTU - SAND119
Sand (60x119.8cm)
\$9.95/Sq.Ft



ABISTU - IRON119
Iron (60x119.8cm)
\$9.95/Sq.Ft



ABISTU - STEEL119
Steel (60x119.8cm)
\$9.95/Sq.Ft



ABISTU - IVORY119
Ivory (60x119.8cm)
\$9.95/Sq.Ft

NOTE: TILE SIZES ARE APPROXIMATE